

CERTIFICATE OF LOCATION OF GOVERNMENT CORNER

NORTH QUARTER Corner of Section 19, Township 106N, Range 40W

5th Principal Meridian, State of Minnesota, County of Murray.

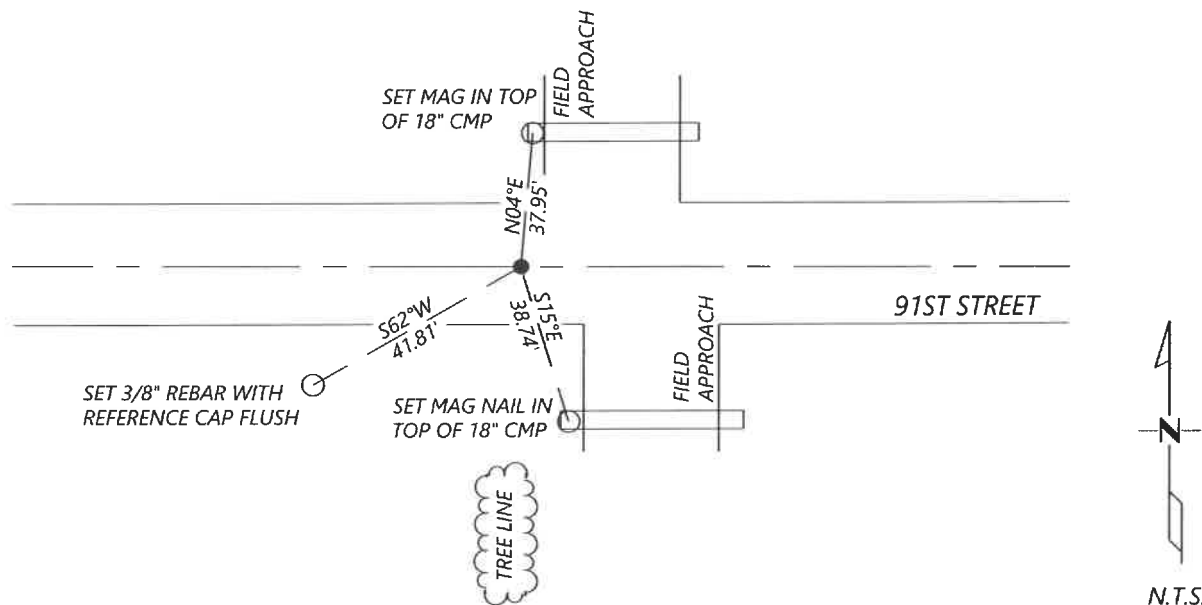
At the corner location shown on the sketch:

☐ On _____ found a _____
DATE

☐ left monument as found ☐ lowered monument ☐ removed monument (explain)

☒ On 11/05/2021 placed a 1/2"x18" REBAR CAPPED "RLS 57085".
DATE

SKETCH OF REFERENCE TIES



Statement of evidence for this corner location is on back of this page.

I hereby certify that this document was researched and prepared by me or under my direct supervision and that I am a licensed Land Surveyor under the laws of the State of Minnesota.

Signature Scott Walker

Date 4-18-2022 License No. 57085

Title:

☒ Land Surveyor ☐ Professional Engineer
☐ County Surveyor ☐ County Engineer

OFFICE OF THE COUNTY RECORDER

County of Murray

I hereby certify that this
document was filed in the Co.

Recorder's office at _____ M. on the
22nd day of April A.D. 20 22

County Recorder Karen Brown

by _____, Deputy

DOCUMENT NO. _____

SETH WECKMAN
Minnesota License No. 57085

Statement of Evidence:

North Quarter corner of Section 19, Township 106 North, Range 40 West, 5th Principal Meridian, Murray County, Minnesota.

1861 D.W. Wellman and S.S. Smoot, U.S. Deputy Surveyors, during the original public land survey a post was set and built mound with trenches, pits, and charred stake.

1901 J.W. Woolstencroft, survey shows a stone in grade, grey stone on top of large stone.

1963 Unknown insert from Murray County, iron pin over field stone. Notes the following ties:
N&C TP SW. 48.90'
N&C PP NE. 62.45'

1963 Minnesota Department of Highways, CSAH No. 7 Highway Plans (S.P. 51-607-01), shows the quarter corner at Sta. 179+31.5 and is inline with a fence to the North.

April 4, 2018 Zieske Land Surveying (Dennis Espian, LS 43803), files a survey and shows an approximate location.

August 22, 2018 Zieske Land Surveying (Dennis Espian, LS 43803), files a survey and shows a found iron stake.

2021 Westwood Professional Services searched the area and did not recover a monument. Lines of occupation consist of an East/West asphalt road, a fence line to the North, and a tree line to the South. Re-established this corner position by using the 2018 Zieske survey. Set a 1/2" x 18" rebar with cap marked, "RLS 57085". This position also agrees with the C.S.A.H. 7 road plans and lines of occupation. Established 3 local reference ties.

Analysis of the recovered data, field evidence and survey measurements, indicates that the monument set is the correct perpetuation of this corner. For additional information concerning this corner please contact Westwood Professional Services.